



## Transformer station type ST-INST

rated power 6,3 kVA

for rated upper voltage 6kV or 10kV



The transformer station type ST-INST is an electrical device designed for use on the ground in conditions with no methane explosion hazard. The transformer station type ST-INST is designed for operate test of switchgears, capacitor banks and transformer station working in the 3-phase mine grid with insulated star point on the transformer (system IT) of rated grid voltage of 6 or 10kV. The transformer station type ST-INST for rated power 6,3 kVA is equipped in power protections against short-circuiting, overloading, ground-fault and overvoltage.

### TECHNICAL DATA:

ingress protection	IP44
station rated power	6,3 kVA
station upper voltage rated power	10 kV, IT system
station lower rated voltage	400 V, TN-C system
frequency	50 Hz
no of phases	3
station upper/lower rated current	0,4/91 A
upper no of outlets	1
dimensions	370x1250x605 mm (height x width x depth)
weight	140 kg

## CONSTRUCTION

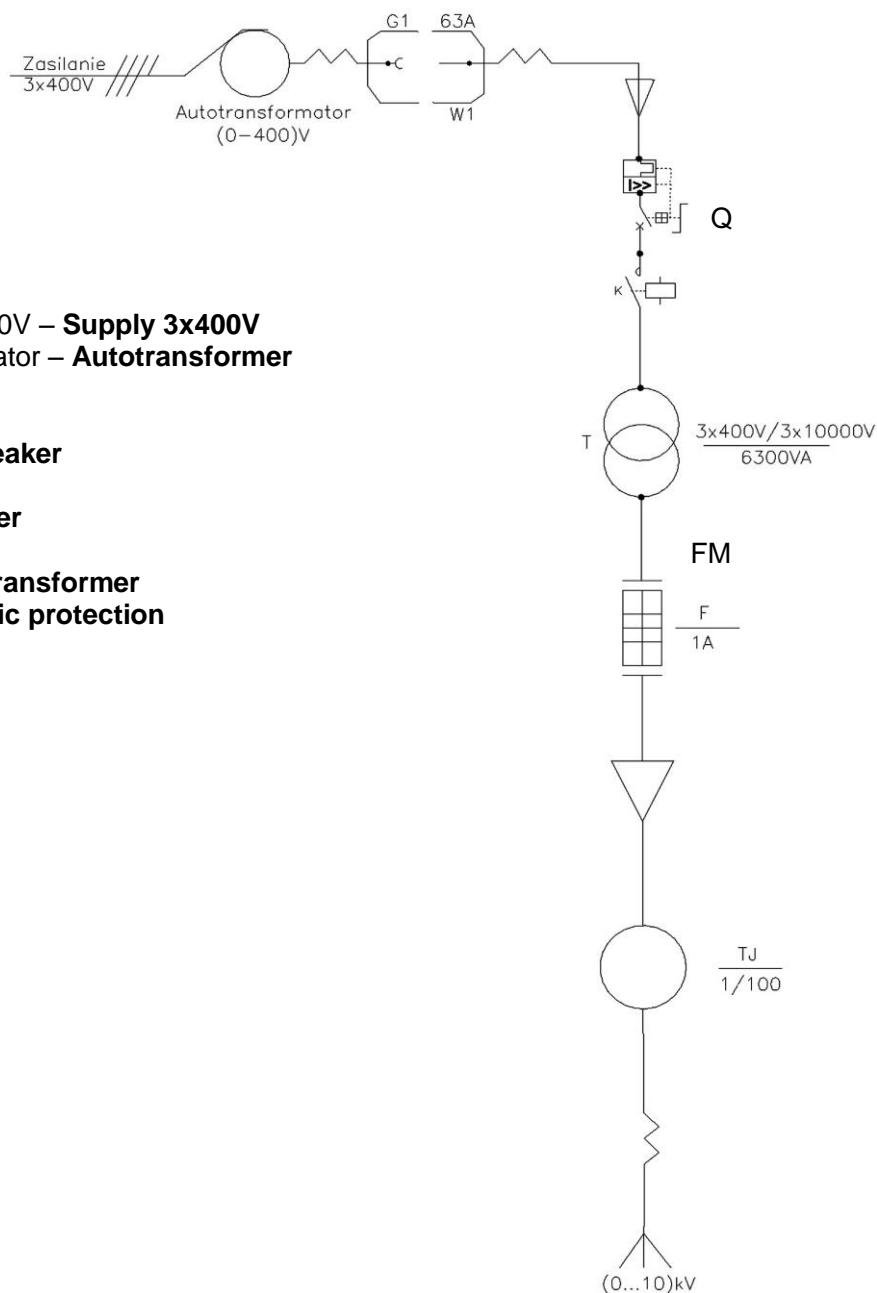
The ST station housing is made of steel sheets and steel profiles. It is of a modular design and comprises of the following parts:

- the chamber of 400 V
- the transformer chamber ( with resin transformer)
- the chamber of 10 kV

## DESCIPTION OF OPERATION

Switching on/off the station is carried out by pushing the SZ/SW button situated on the face of low voltage chamber. Turning on/off the breaker „Q” is carried out by moving his lever in TURNING ON/OFF position. Turning on the contactor K is possible when emergency button is not pushed and breaker protections (overloading and short-circuit) and electronic protection FM (overvoltage, ground-fault) are not tripped. Station cooperates with autotransformer with regulated voltage 0-400V, which allows achieve regulated test voltage 0-10kV.

## SCHEMATIC DIAGRAM



### Legend:

- Zasilanie 3x400V – **Supply 3x400V**  
 Autotransformator – **Autotransformer**  
 G1 – **socket**  
 W1 – **plug**  
 Q – **circuit breaker**  
 K – **contactor**  
 T – **transformer**  
 F – **fuse**  
 TJ – **current transformer**  
 FM – **electronic protection**

Orders should be made in writing or by fax to the address:

 **Instal-Service PL**

Spółka z ograniczoną odpowiedzialnością  
 Spółka komandytowa  
 58-506 Jelenia Góra, ul. Wrocławska 15a  
 tel. (+48 075) 64-57-950  
 fax. (+48 075) 64-57-951  
 e-mail: instal@instal-service.pl